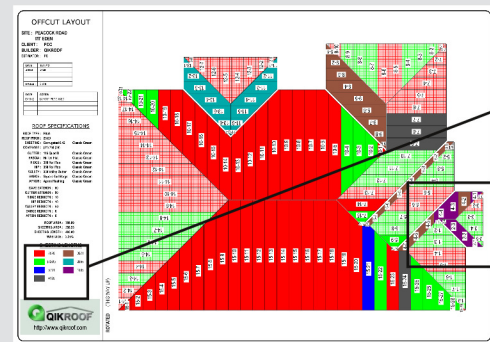


Sample Output (Cont'd)

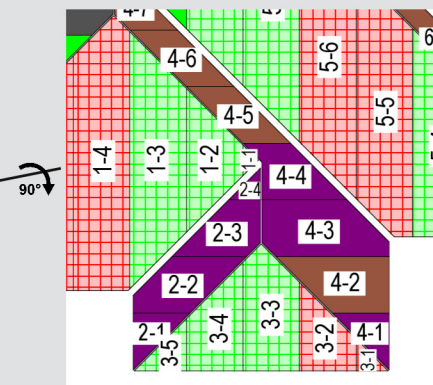
Offcut Layout



SHEETING LENGTHS

7578	3871
(7269)	2855
5791	1885
4135	

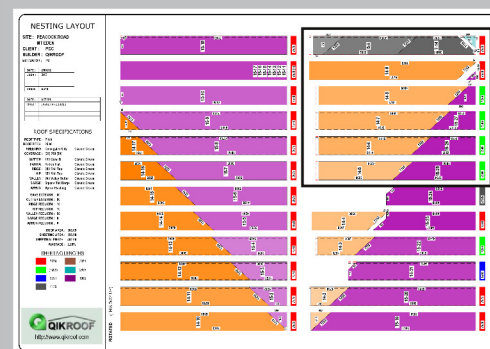
Sheeting lengths are indicated by the colour. Non-primary lengths are shown in brackets.



Cross-hatched panels indicates these are offcut from the solid fill panels.

The relation between the sheets and their offcuts are shown in this layout.

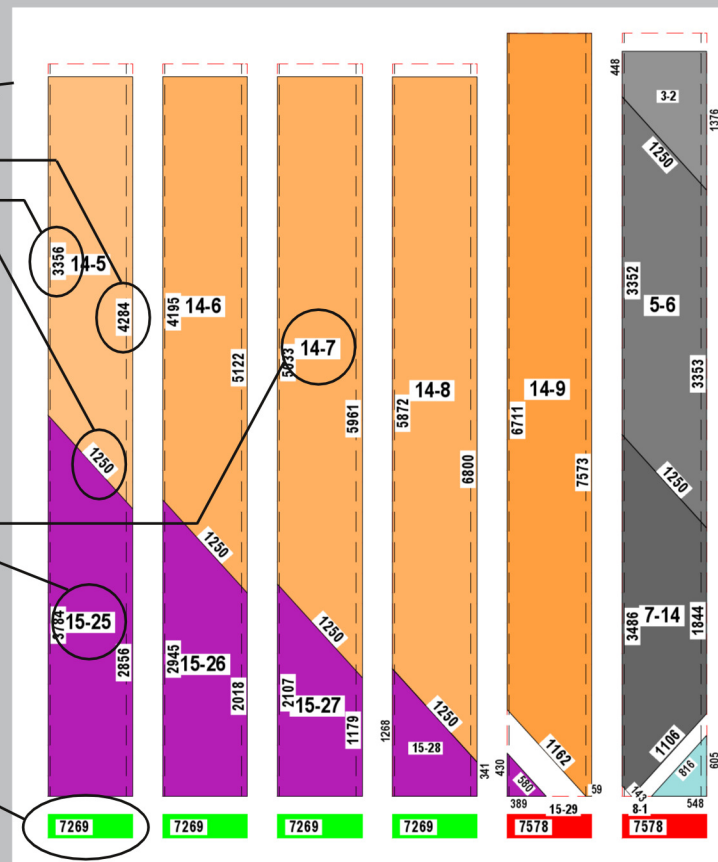
Nesting Layout



Length of the edge after the cut

Panel reference numbers

Sheeting length, also indicated by the colour



This layout shows the sheets after they have been nested together. The colours correspond to the panel layout. For this particular example, 3 pages of Nesting Layout will be required to show all of the nested sheets.

Quote System

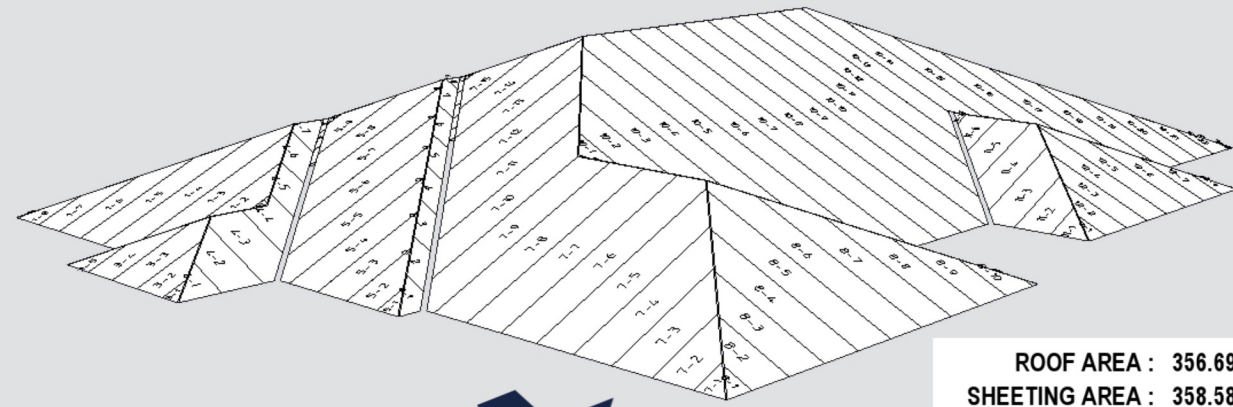
There is a Quote version of QikRoof intended for the end user. Operation of this version is similar to the full version. With the Quote version, the user cannot produce the material list, flashing layout and the sheeting layouts. The single page output is designed for quoting purpose only. This quote output has the roof plan with all check measurements and the total sheeting length required displayed.

Files produced on the Quote version can be emailed or uploaded to be processed on the full version. At this stage, an order would have been raised. The operator receiving the order will simply check the validity of the roof and produce the material list, sheeting layouts and flashing layout and forward the resultant PDF file back to the client.

Email: qikroof@qikroof.com
Phone: +61 8 8297 2198
Address: Level 1, Office 14,
 78-86 Anzac Hwy,
 Everard Park, South
 Australia 5035



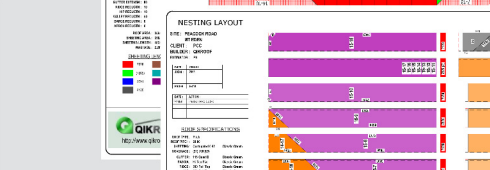
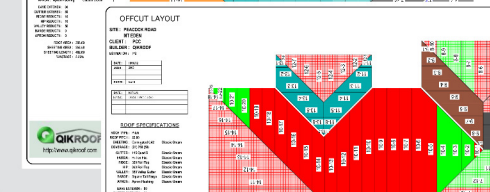
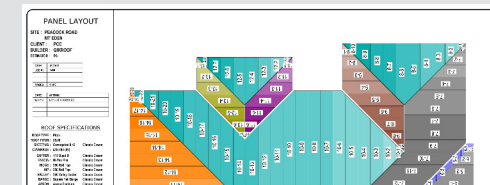
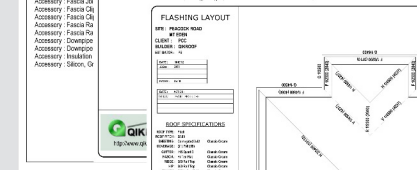
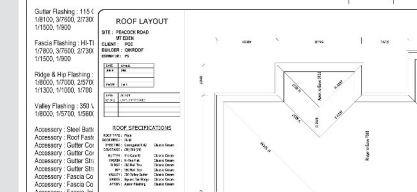
www.qikroof.com



ROOF AREA : 356.69
SHEETING AREA : 358.58
SHEETING LENGTH : 482.98
WASTAGE : 2.32%



ITEM	QTY	PRICE
Sheeting: Compulid G-42 Classic Cream	482.98	482.98



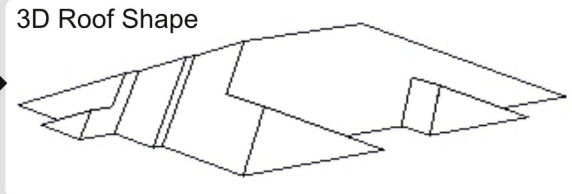
The **QikRoof** program is the most advanced application to tackle the laying of steel sheeting on any roof shape. For more information, please consult our website at www.qikroof.com.

Services QikRoof Provide

Our program provides fast and low-cost roof calculations. We provide a highly accurate steel roof take off with minimal wastage, as well as multiple detailed layouts. Our take off also includes flashing and various accessories that may be required for the roof.

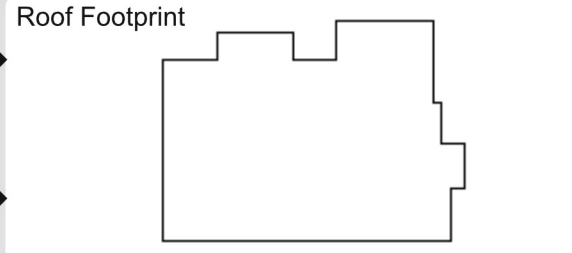
How QikRoof Works

Import the shape from a file (e.g. Roof truss manufacturer Pryda's QXF file for QikRoof/QikTimber interface).



Generate Roof Surfaces

Specify roof footprint one eave at a time using the Outline Generator.



Specify roof footprint using pre-defined shapes in the Shape Generator.

Output

- Roof Layout
- Flashing Layout
- Panel Layout
- Offcut Layout
- Nesting Layout
- Material List

Compute Nesting

QikRoof's advanced algorithm calculates the optimal nested results for the sheeting arrangement.

Nesting Options - Primary lengths as defined by the roof shape are output as default. Extra lengths can be added to reduce wastage (Extra lengths are shown in brackets).

Multiple sheeting types and sizes are supported, to be nested separately.

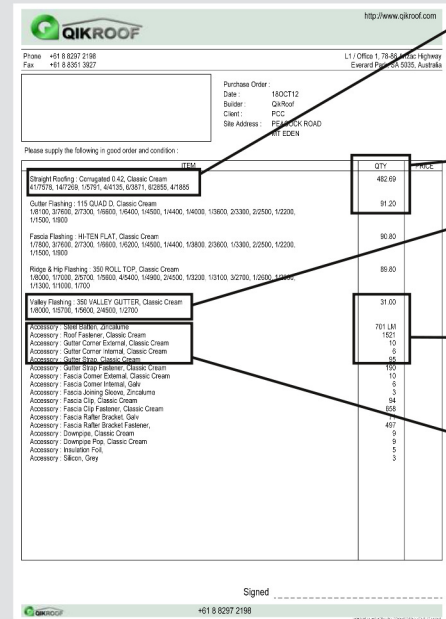
Multiple levels are supported, to be nested separately.

Extra	Lengths	Wastage	Quantity	Lengths
0	6	3.19%	487.31	7578
1	7	2.32%	482.98	(7269)
2	8	1.92%	481.00	5791
3	9	1.62%	479.54	4135
4	10	1.52%	479.07	3871
5	11	1.45%	478.71	3185
6	12	1.28%	477.90	1677
7	13	1.17%	477.39	
8	14	1.14%	477.22	
9	15	1.13%	477.16	
10	16	0.99%	476.49	
11	17	0.94%	476.24	

Sample Output

(All outputs can be printed in colour or mono. Printing in A4 and A3 sizes are also both supported. All output can be automatically bundled into a PDF document.)

Material List

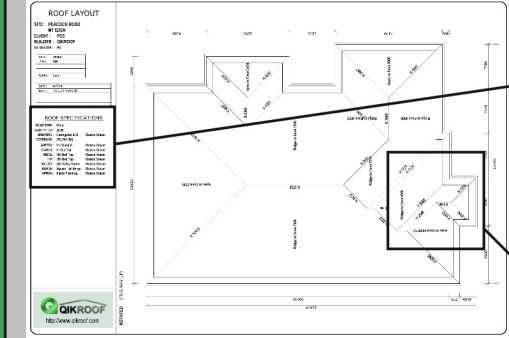


Material Description	QTY
Straight Roofing : Corrugated 0.42, Classic Cream 41/7578, 14/7269, 1/5791, 4/4135, 6/3871, 6/2855, 4/1885	482.69
Sheeting materials, colours, quantities, lengths	91.20
Valley Flashing : 350 VALLEY GUTTER, Classic Cream 1/8000, 1/5700, 1/5600, 2/4500, 1/2700	31.00
Flashing materials, colours, quantities, lengths	701 LM
Accessory : Steel Batten, Zincalume	1521
Accessory : Roof Fastener, Classic Cream	10
Accessory : Gutter Corner External, Classic Cream	6
Accessory : Gutter Corner Internal, Classic Cream	95
Accessory : Gutter Strap, Classic Cream	
Accessory items	

This output contains the comprehensive list of materials needed to be supplied.

Sample Output (Cont'd)

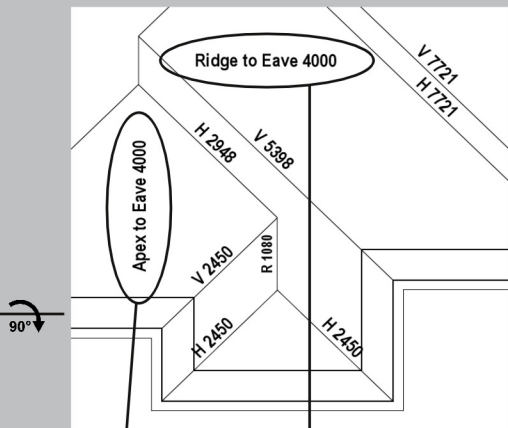
Roof Layout



ROOF TYPE :	Pitch
ROOF PITCH :	25.00
SHEETING :	Corrugated 0.42 Classic Cream
COVERAGE :	(21) 760 (59)
GUTTER :	115 Quad D Classic Cream
FASCIA :	Hi-Ten Flat Classic Cream
RIDGE :	350 Roll Top Classic Cream
HIP :	350 Roll Top Classic Cream
VALLEY :	350 Valley Gutter Classic Cream
BARGE :	Square Tail Barge Classic Cream
APRON :	Apron Flashing Classic Cream

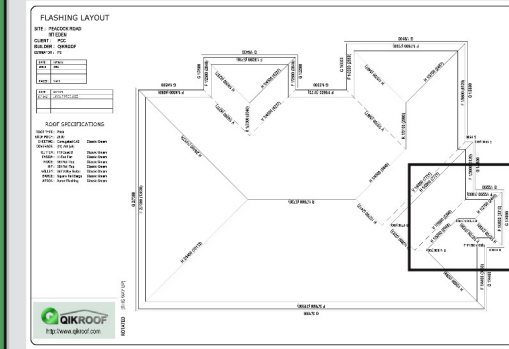
This layout shows the various roof distances allowing builders to check the measurements and make adjustments if necessary.

Roof specifications: These specifications can be changed by the user of the program which will be reflected in the layouts and take off.

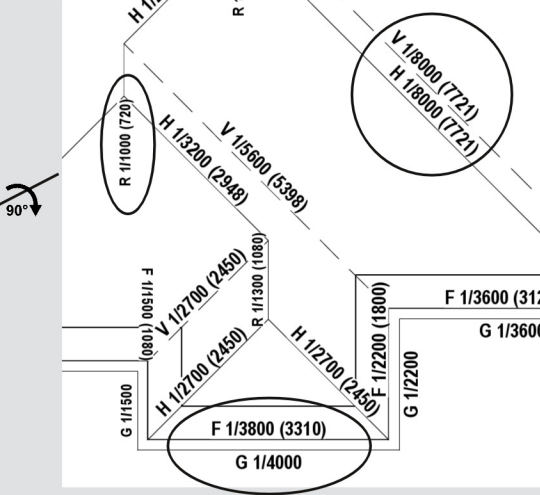


Length tags: These are used for checking the measurements, allowing adjustments to be made.

Flashing Layout

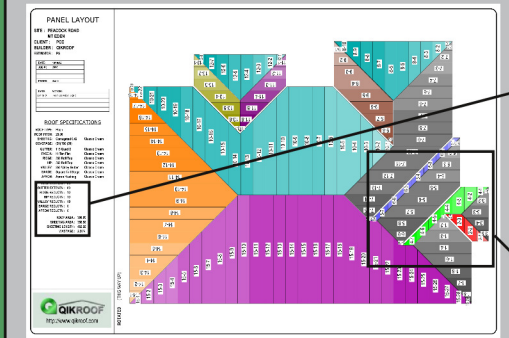


This layout shows all of the flashing lengths used to calculate the flashing quantities to be supplied.



Flashing tags: The tags show the quantities and lengths of flashings to be supplied at each of the roof lines.

Panel Layout

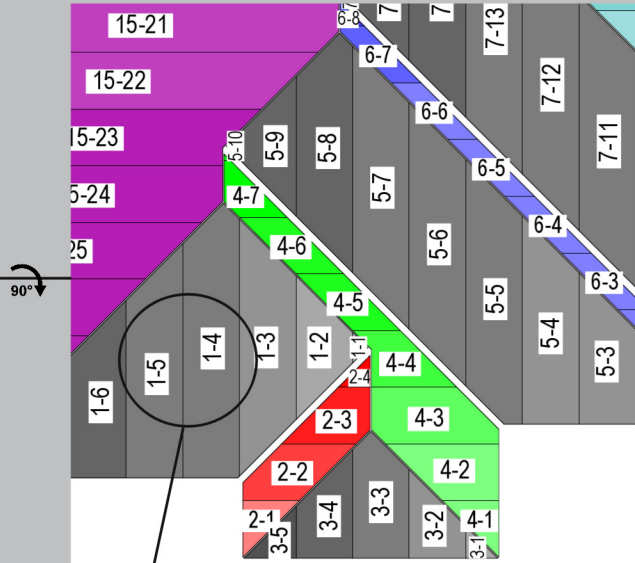


EAVE EXTENSN :	80
GUTTER EXTENSN :	80
RIDGE REDUCTN :	10
HIP REDUCTN :	10
VALLEY REDUCTN :	50
BARGE REDUCTN :	0
APRON REDUCTN :	0
ROOF AREA :	356.69
SHEETING AREA :	358.58
SHEETING LENGTH :	482.98
WASTAGE :	2.32%

This layout shows how the sheets are laid onto the roof surfaces. The colour used for each surface is different except in the case where two surfaces are linked.

Sheeting extension / reduction values can be specified by the user.

The area, sheeting length, and wastage values are calculated by the program.



Panel Numbers: These are used in reference to the Nesting Layout (eg. 1-4 = Surface 1, Panel 4).